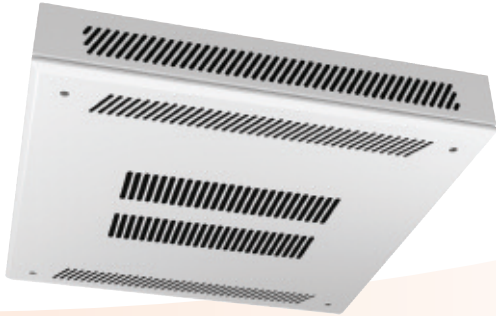


Skyline®

The Skyline® fits neatly into existing ceiling space - replacing a 600mm x 600mm ceiling tile and because it is ceiling mounted, it saves valuable wall space - particularly important in retail units. It is unobtrusive and effective. Supplied as standard in white but can be supplied in any colour.



Model	Heat Output at 80°C		Heat Output at 75°C		Heat Output at 70°C		Heat Output at 65°C	
	Normal kW (Btu/h)	Boost kW (Btu/h)	Normal kW (Btu/h)	Boost kW (Btu/h)	Normal kW (Btu/h)	Boost kW (Btu/h)	Normal kW (Btu/h)	Boost kW (Btu/h)
Hydronic								
Skyline CT18	3.5 (11900)	5.5 (18800)	3.1 (10700)	5.0 (16900)	2.8 (9600)	4.4 (15000)	2.5 (8700)	3.9 (13200)

Model	Heat Output at 60°C		Heat Output at 55°C		Heat Output at 50°C		Heat Output at 45°C	
	Normal kW (Btu/h)	Boost kW (Btu/h)	Normal kW (Btu/h)	Boost kW (Btu/h)	Normal kW (Btu/h)	Boost kW (Btu/h)	Normal kW (Btu/h)	Boost kW (Btu/h)
Hydronic								
Skyline CT18	2.3 (7900)	3.3 (11400)	2.1 (7000)	3.0 (10100)	1.8 (6000)	2.6 (8900)	1.5 (5100)	2.2 (7600)

Model	Heat Output at 40°C	
	Normal kW (Btu/h)	Boost kW (Btu/h)
Hydronic		
Skyline CT18	1.2 (4100)	1.8 (6300)

Model	Sound Levels		Casing Colour	Fan-Only
	Normal (dBA)	Boost (dBA)		
Hydronic				
Skyline CT18	44	55	White	•

Heat outputs tested in accordance with BS 4856 using entering water temperature. Fan-only option operational only when central heating system is switched off.

Sound levels measured at 1.5m.

Model	Flow and Return Connections	Main Cable	Transformer	Flexible Hoses	Isolating Valves	Fused Spur	Power Consumption		Water Capacity (Litres)
							Normal (Watts)	Boost (Watts)	
Hydronic									
Skyline CT18	22mm	1.5m	n/a	n/a	n/a	3A	50	70	0.9

Skyline CT18

Finish

Outer casing 0.7mm zinc-coated steel. Polyester powder-coated Paint specification: textured white, BS 4800 00A01 18% gloss

Installation

- Maximum installation height 3.2m (10'6") to underside
- Installed to 180mm - penetration depth in recess (excluding fittings)
- Four air inlet options: room only, void only, room and void, fresh air (spigot required)
- 600mm side clearance required
- Fixing brackets (4) supplied for connection to 6mm threaded rods or chains (rods and chains - not supplied)
- Blanking plates (2) supplied for air circulation options
- Unit must be earthed
- Supplied with remote operating switch
- Suitable for two-pipe central heating systems only

Commissioning

Check water temperature is hot enough to activate low temperature cut-out (LTC). The inclusion of an automatic air vent at the highest point is recommended to avoid possible air locks

Controls

Two rocker fan switches - normal/off/boost, fan-heating/fan-only. Low temperature cut-out thermostat set to energise fan at approximately 35°C

Accessories

- Wall-mounted room thermostat
- Fresh air inlet spigot to suit 100mm flexible hose

Skyline CT18

