

Pedestal Range

A new range of freestanding convector pedestal heaters, **Kiosk**, **Trafalgar**, and **Tube** in a variety of shapes, lengths and finishes



Features

- Perfect for beneath large windows, Smith's freestanding pedestal heaters help to minimise the problem of downward cold airflow with commonly associated with glazed façades.
- Fitting into the smallest of spaces Smith's range of freestanding pedestal heaters provide a stylish solution without the need for wall hung heaters.
- Minimal height of max. 206mm and lengths from 0.5m to 2m
- Without fan for dry and wet environments
- Perfect for where sub-floor trench heating is not possible
- Heat source: boiler or heat pump

Applications

Suitable for the following commercial and residential application areas:

- Corridors
- Reception areas
- Wet rooms
- Toilets
- Changing rooms
- Conservatories

Finish

Outer casing 1.2mm zintec. Polyester powder coated.
Paint specification: textured white BS 4800 00A01 18% gloss.

Installation

Flow and return connections 22mm copper.
Designed for system pressures up to 10 bar.
Suitable for two pipe central heating systems only.

Customised requirements

Any colour finishes are available on request.
Price and availability will be confirmed at the time of order.

Controls

Supplied with TRV and lockshield valve.

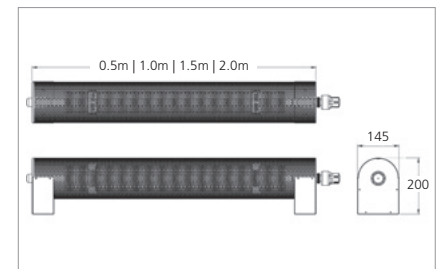
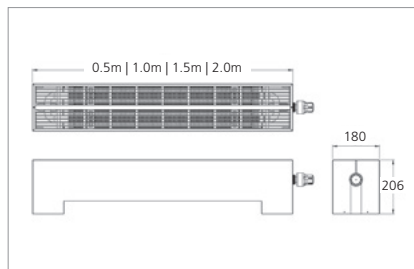
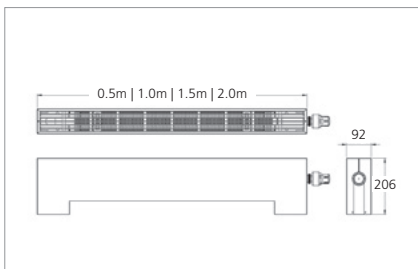
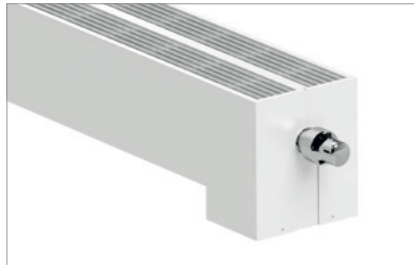
Specification

To specify state:

Low height freestanding pedestal heater in linear form with rectangular profile, large rectangular profile or circular profile.
As Smith's Kiosk, Trafalgar or Tube

Pedestal Range

A new range of freestanding convector pedestal heaters, **Kiosk**, **Trafalgar**, and **Tube** in a variety of shapes, lengths and finishes



Kiosk
Rectangular design

Trafalgar
Larger rectangular design

Tube
Tubular design

Heat output

Product length	ΔT °C					
	20 ΔT	30 ΔT	40 ΔT	50 ΔT	60 ΔT	70 ΔT
Kiosk						
0.5m	22	39	60	83	109	136
1.0m	73	133	202	281	367	459
1.5m	125	226	345	479	626	783
2.0m	176	320	487	677	884	1106
Trafalgar						
0.5m	39	72	110	154	201	253
1.0m	133	243	373	519	681	856
1.5m	226	414	635	885	1160	1459
2.0m	320	585	898	1250	1640	2062
Tube						
0.5m	36	64	96	132	170	212
1.0m	88	157	237	325	421	524
1.5m	141	251	378	519	671	836
2.0m	193	344	519	712	922	1148

Entering ambient air temperature of 20°C
Outputs in Watts. In accordance with EN442 - BSRIA verified

How to calculate Mass Flow Rate (L/S)

$$\text{Flowrate (L/S)} = \left[\frac{\text{Total heat emitted from product (kW)}}{\text{(Flow temperature - Return temperature)}} \right] \times 4.186 \text{ (Specific heat)}$$

How to calculate Mean Water Temperature (ΔT)

$$\text{Mean water temperature (ΔT)} = \left[\frac{\text{Flow temperature} + \text{Return temperature}}{2} \right] - \text{Ambient Temperature}$$

Ordering guide

Listed below are the Pedestal complete with TRV.
For all other variants please visit our website for the most up to date information.

Description	Weight (Kg)	Product code
Kiosk		
500 Kiosk pedestal natural convector white TRV	5	HPKI100025
1000 Kiosk pedestal natural convector white TRV	10	HPKI100028
1500 Kiosk pedestal natural convector white TRV	15	HPKI100031
2000 Kiosk pedestal natural convector white TRV	20	HPKI100034
Trafalgar		
500 Trafalgar pedestal natural convector white TRV	8	HPTR110025
1000 Trafalgar pedestal natural convector white TRV	16	HPTR110028
1500 Trafalgar pedestal natural convector white TRV	24	HPTR110031
2000 Trafalgar pedestal natural convector white TRV	32	HPTR110034
Tube		
500 single rnd pedestal natural convector black rnd perf	5	HPTU110000
1000 single rnd pedestal natural convector black rnd perf	10	HPTU110003
1500 single rnd pedestal natural convector black rnd perf	15	HPTU110006
2000 single rnd pedestal natural convector black rnd perf	20	HPTU110009