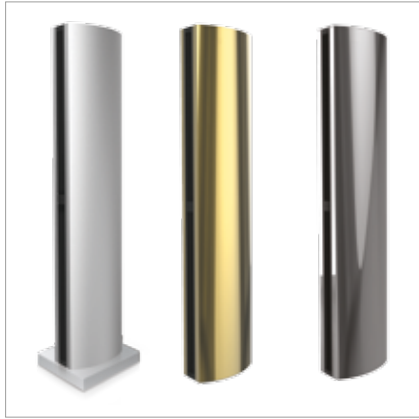


Air Curtains - Stella



Stella air curtains offer the ideal solution to separating climate zones within different temperatures by creating strong air flow in the vicinity of open doors



Features

- The use of Smith's air curtains reduces the loss of energy used for the heating or cooling of the premises and also acts as an effective barrier to dust, insects and odours
- An attractive addition to any modern interior, Stella air curtains have a stylish stainless steel body and are available in silver and gold mirror and brushed stainless steel finishes
- High-performance centrifugal fans
- Special form of aerodynamic pressure chamber ensures dense uniform air flow over the entire height of the curtain
- Swivel nozzle allows changing the direction of the air flow in case of change in external conditions to ensure efficient protection of the doorway
- Use of computer simulations of hydrodynamic processes ensured minimum noise level and high efficiency of curtain operation
- Fixing elements, electrical communications and connections to the heating system (when connected from the bottom) are not visible after installation of the air curtain
- The striking appearance of the curtains becomes an ornament of any modern interior

Applications

- Office
- Hospitality
- Retail
- Showroom

Finish

Body: Mirror Stainless Steel as standard
Also available in Brushed Stainless Steel or Gold Mirror Stainless Steel

Installation

Installed universally (horizontally to vertically) or as free-standing units
For interior use only

Controls

Remote control with thermostat. Control cabinet (optional)

Specification

To specify state:

Universally mounted electric Air Curtain in mirror stainless steel (or Brushed stainless steel, or Gold Mirror Stainless Steel) with swivel nozzle and with remote control and thermostat at 19.7kW or 26.2kW. As Smith's Air Curtains Stella Electric in Mirror Stainless Steel (or Brushed Stainless Steel, or Gold Mirror Stainless Steel) at 19.7kW or 26.2kW.

Universally mounted hydronic Air Curtain in mirror stainless steel (or Brushed stainless steel, or Gold Mirror Stainless Steel) with swivel nozzle and with remote control and thermostat at 29.2kW or 36.6kW. As Smith's Air Curtain Stella Hydronic in Mirror Stainless Steel (or Brushed Stainless Steel, or Gold Mirror Stainless Steel) at 29.2kW or 36.6kW

Air Curtains - Stella



Stella air curtains offer the ideal solution to separating climate zones within different temperatures by creating strong air flow in the vicinity of open doors

	HPAC64001 Electric	HPAC64002 Electric	HPAC64003 Electric	HPAC64004 Water	HPAC64005 Water	HPAC64006 Water
Heating power, kW	19.7	19.7	26.2	29.2 / 23.7	29.2 / 23.7	36.6 / 29.6
Capacity, m ³ /h	4800 / 2800	4800 / 2800	5600 / 2800	4800 / 2800	4800 / 2800	5600 / 2800
Maximum installation height, m	4.5	4.5	4.5	4.5	4.5	4.5
Supply voltage, V	415v (3 phase)	415v (3 phase)	415v (3 phase)	415v (3 phase)	415v (3 phase)	415v (3 phase)
Air temperature increase, °C	12 / 20 °C	12 / 20 °C	13 / 26 °C	21.9 / 27 °C	21.9 / 27 °C	23.5 / 29.8 °C
Device dimensions (WxHxD), mm	350x2015x500	350x2215x500	350x2415x500	350x2015x500	350x2215x500	350x2415x500
Package dimensions (WxHxD), mm	2290x775x550	2520x775x550	2820x775x550	2290x775x550	2520x775x550	2820x775x550

Ordering guide

Description	Net Wt (Kg)	Product Codes
Electric		
Stella E20	65	HPAC64001
Stella E20 Plus	70	HPAC64002
Stella E26	85	HPAC64003
Water		
Stella W29	65	HPAC64004
Stella W29 Plus	70	HPAC64005
Stella W37	85	HPAC64006

As part our commitment to continuous improvement Smith's Environmental Products may change the specifications of its products without prior notification or public announcement. All descriptions, illustrations, drawings and specifications in this publication present only general particulars and shall not form part of any contract. All dimensions are in mm unless otherwise stated.