

Air Curtains



Smith's Air Curtain's enhancing the built environment.



Why choose Smith's?

For over twenty-five years, Smith's EP UK has been manufacturing and providing an extensive range of commercial and domestic heating solutions from its HQ in the UK. Part of the global family-owned US-based business, the Swan Group, Smith's works closely with architects, consultants, heating contractors and installers to deliver high quality products with industry-leading warranties on time, with an aftercare and technical support service that is second to none.

We take an active, innovative approach to new product development and creating bespoke heating products to fulfil the creative requirements of a competitive and demanding customer base that spans the UK, Northern Europe and the US. We believe it's essential to be flexible in our partnerships while remaining uncompromising on the high quality and care that goes into every product in our range. Smith's is an outward-looking, growing business and we are forging relationships with like-minded manufacturers to ensure that we can supply additional new and essential heating or water products in areas where we do not specialise and where our partners excel.

This supplement to our principle brochure showcases our range of air curtains. At the same time, we have the ability and the will to work alongside clients at any point in the construction process and collaborate to develop specific solutions for any and every need. We take great pride and go to great lengths to leave our customers not only satisfied but coming back again and again for heating solutions that are perfect for your project, each and every time.



Gary Haynes MBA, B.Eng.(Hons)
Managing Director

#ThinkSmiths



Air curtains - Electric and Water

STELLA Series					18 kW	24 kW	29 kW	37 kW		Page			
STELLA Electric										4			
STELLA Water										4			
S Series					3 kW	5 kW	6 kW	9 kW					
Electric S2										7			
Electric S2 Metallic										7			
PS Series					8 kW	12 kW	18 kW	24 kW	28 kW	30 kW	36 kW	37 kW	
PS Electric													8
PS (W) Water													9



Electric and water air curtains

STELLA



STELLA series interior air curtains



Stylish stainless steel body



Ventilation unit by EBM PAPST, Germany



Tilting nozzles to change air flow direction

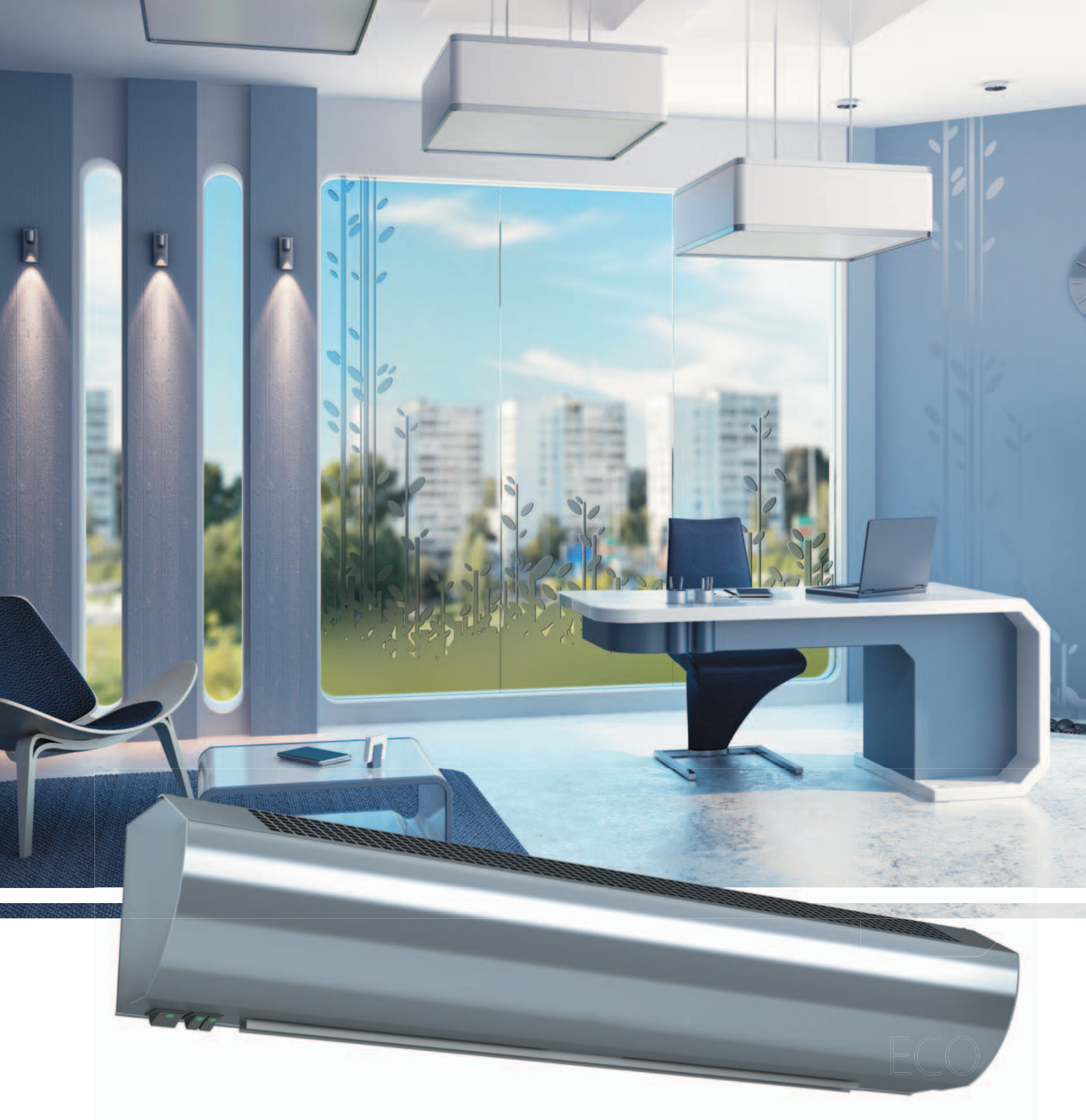
- High-performance centrifugal fans;
- Special form of aerodynamic pressure chamber ensures dense uniform air flow over the entire height of the curtain;
- Swivel nozzle allows changing the direction of the air flow in case of change in external conditions to ensure efficient protection of the doorway;
- Use of computer simulations of hydrodynamic processes ensured minimum noise level and high efficiency of curtain operation;
- Fixing elements, electrical communications and connections to the heating system (when connected from the bottom) are not visible after installation of the air curtain;
- Air curtains are installed directly on the floor or suspended above the doorway;
- The striking appearance of the curtains becomes an ornament of any modern interior.

Application area: Stella air curtains serve to separate climate zones with different temperatures by creating a strong air flow in the vicinity of open doors and gates. The use of Smith's air curtains reduces the loss of energy used for the heating or cooling of the premises and also act as an effective barrier to dust, insects and odours.

	HPAC64001 Electric	HPAC64002 Electric	HPAC64003 Electric	HPAC64004 Water	HPAC64005 Water	HPAC64006 Water
Heating power, kW	19.7	19.7	26.2	29.2 / 23.7	29.2 / 23.7	36.6 / 29.6
Capacity, m³/h	4800 / 2800	4800 / 2800	5600 / 2800	4800 / 2800	4800 / 2800	5600 / 2800
Maximum installation height, m	4.5	4.5	4.5	4.5	4.5	4.5
Supply voltage, V	415v (3 phase)	415v (3 phase)	415v (3 phase)	415v (3 phase)	415v (3 phase)	415v (3 phase)
Air temperature increase, °	12 / 20 °	12 / 20 °	13 / 26 °	21.9 / 27 °	21.9 / 27 °	23.5 / 29.8 °
Control	Remote control with thermostat, control cabinet (optional)					
Device dimensions (WxHxD), mm	350 2015 500	350 2215 500	350 2415 500	350 2015 500	350 2215 500	350 2415 500
Package dimensions (WxHxD), mm	2290 775 550	2520 775 550	2820 775 550	2290 775 550	2520 775 550	2820 775 550
Net/gross weight, kg	65 / 95	70 / 100	85 / 115	65 / 95	70 / 100	85 / 115

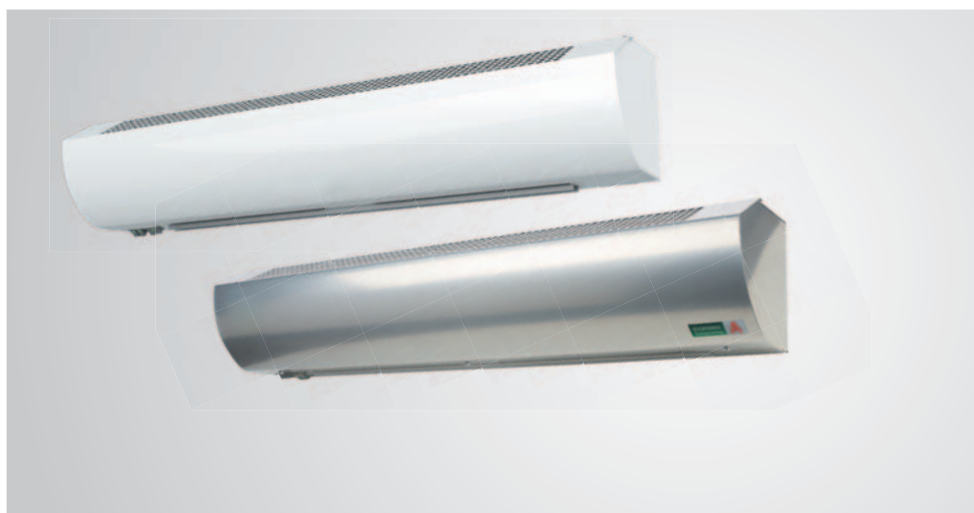
Finish is Mirror Stainless Steel.

Also available in Brushed Stainless Steel and Gold Mirror Stainless Steel.



Electric and water air curtains

S2, S2 Metallic, PS, PS (W)



Heating power
3 - 9 kW



Installation height
2,5 m

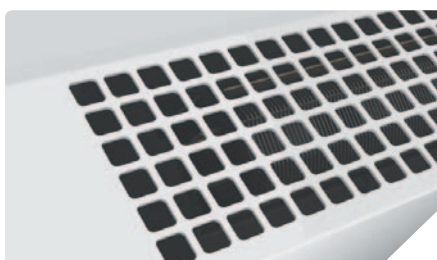


Horizontal
mounting

S2 / S2 metallic
series



Illuminated dust and water resistant switches



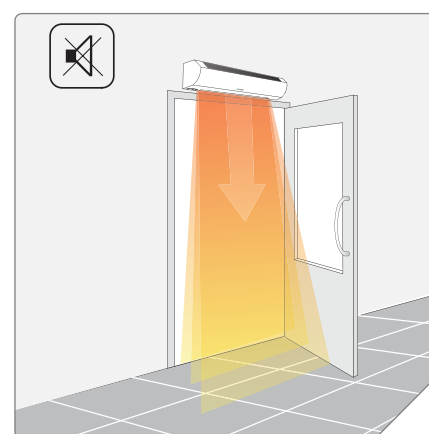
Air intake grille with low aerodynamic resistance



Remote thermostat with fan speed control

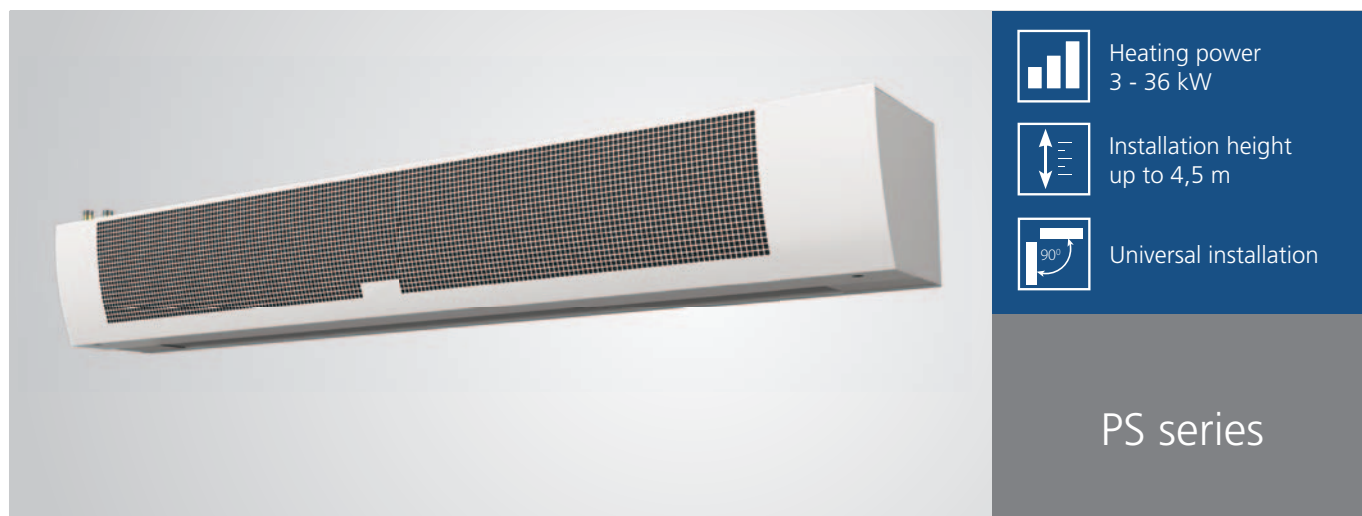
- Innovative noise reduction system;
- Shock-absorbing dampers to minimize noise;
- Stitch-elements ensure fast heating and high temperature difference;
- Operation mode without heating for protection against outside heat, dust and insects in summer;
- Convenient and aesthetic connection to the terminals inside the housing (3 kW model has a power cord with a plug);
- Built-in thermostat protects against overheating.

Application area: pavilions, small retail and market outlets, mini-markets, pick-up windows.



Efficient and quiet protection against cold air from outside

	HPAC64105 Electric	HPAC64106 Electric	HPAC64109 Electric	HPAC64107 Electric	HPAC64110 Electric	HPAC64108 Electric	HPAC64111 Electric
Heating power, kW	3.3 / 1.6 / 0	5.5 / 2.7 / 0	5.5 / 2.7 / 0	6.6 / 3.3 / 0	6.6 / 3.3 / 0	9.8 / 4.9 / 0	9.8 / 4.9 / 0
Capacity, m ³ /h	350	450	450	700	700	1 050	1 050
Maximum installation height, m	2.5	2.5	2.5	2.5	2.5	2.5	2.5
Supply voltage, V	230	230	230	230	230	415 (3 phase)	415 (3 phase)
Air temperature increase, °	26 °	34 °	34 °	26 °	26 °	26 °	26 °
Control	The keys on the body			Remote control with thermostat in the set (BRC-E)			
Device dimensions (WxHxD), mm	585x150x155	800x150x155	800x150x155	1080x150x155	1080x150x155	1570x150x155	1570x150x155
Package dimensions (WxHxD), mm	630x165x185	860x165x185	860x165x185	1180x165x185	1180x165x185	1655x165x185	1655x165x185
Net/gross weight, kg	4.5 / 5.1	6.8 / 7.4	6.8 / 7.4	8.4 / 9.4	8.4 / 9.4	12.6 / 13.9	12.6 / 13.9
Product Colour	White	White	Metallic	White	Metallic	White	Metallic



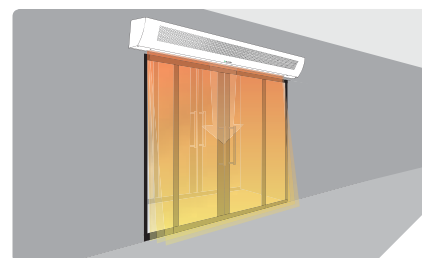
Effective air curtains with mounting height up to 4.5 m



Aerodynamic directing nozzles generate a solid air flow

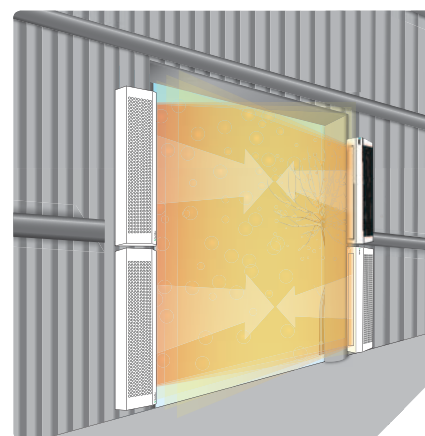


Remote thermostat with fan speed control



Horizontal installation

- Two performance modes, 100% / 70%, allow adaptive control of curtains taking into account weather conditions;
- Solid nozzle has no blind zones and provides reliable protection;
- High-efficiency fans;
- Precise balancing almost excludes vibration and ambient noise during operation of curtains;
- Work chamber of special design generates stabilized laminar air flow;
- Minimization of turbulent flows in curtains ensures formation of solid closing flow, effectively protecting opening, at nozzle outlet;
- Capillary protection thermostat ensures timely shutdown of curtain in case of overheating, and manual restart function excludes repeated overheating;
- Anticorrosive treatment and strong polymer coating of casing;
- Operation mode without heating for protection from outdoor heat, dust and insects in summer.

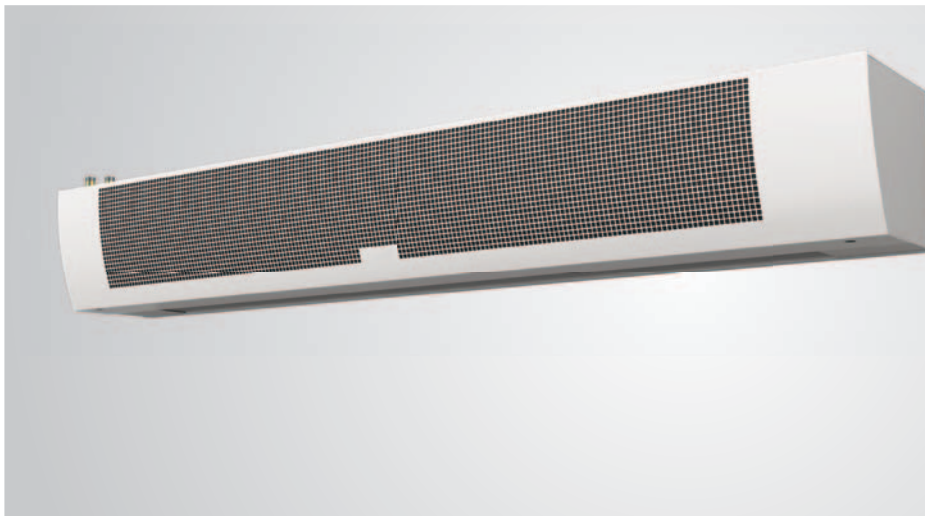


Vertical installation

Application area: production premises, work shops, hangars, warehouses and logistics centers, sports facilities.

	HPAC64101 Electric	HPAC64102 Electric	HPAC64103 Electric	HPAC64104 Electric
Heating power, kW	13.1 / 6.6 / 0	19.7 / 9.8 / 0	26.2 / 13.1 / 0	39.3 / 19.7 / 0
Capacity, m³/h	2500 / 1800	4000 / 2700	5000 / 3500	5000 / 3500
Maximum installation height, m	4.5	4.5	4.5	4.5
Supply voltage, V	415 (3 phase)	415 (3 phase)	415 (3 phase)	415 (3 phase)
Air temperature increase, °	15 / 20 °	15 / 20 °	15 / 21 °	22 / 31 °
Control	Remote control with thermostat			
Device dimensions (WxHxD), mm	1120 285 295	1530 285 295	2020 285 295	2020 285 295
Package dimensions (WxHxD), mm	1140 325 385	1540 325 385	2060 325 385	2060 325 385
Net/gross weight, kg	22.6 / 25.5	27.9 / 31.1	40.2 / 43.8	43.9 / 47.5

WATER AIR CURTAINS



Heating power
11 - 45 kW



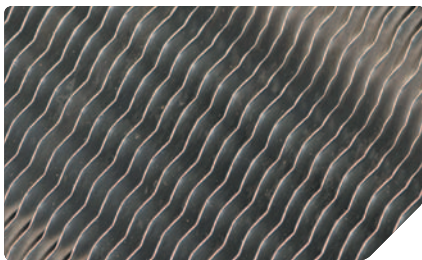
Installation height
up to 4,5 m



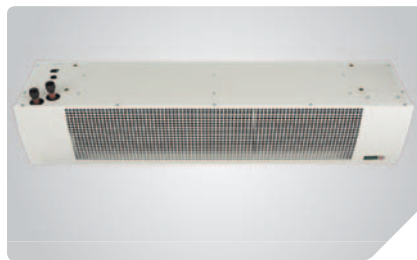
Universal mounting

PS (W)
series

Efficient industrial air curtains with water heat exchanger.



Corrugated fins of the heat exchanger improves heating efficiency



Pipe work connections can be reversed to enable left or right-handed connections



Remote thermostat with fan speed control

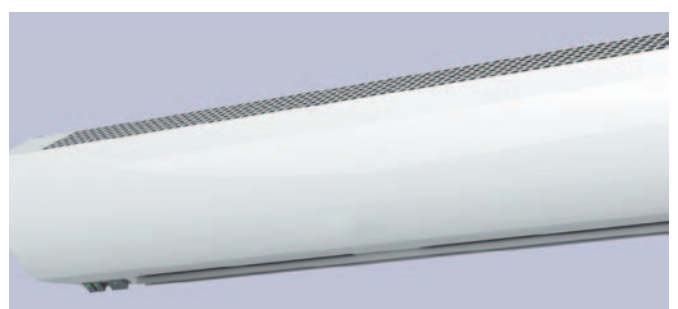
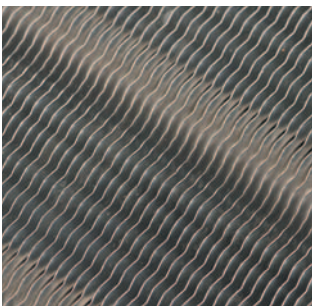
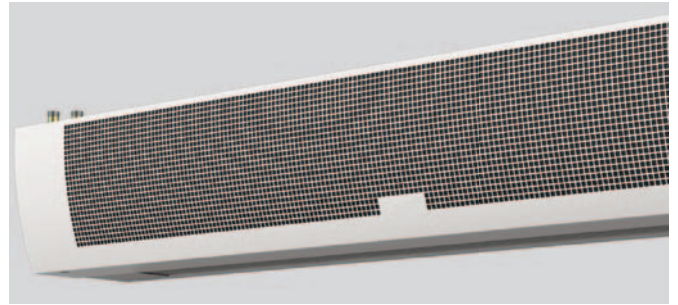
- Reliable copper-aluminium heat exchanger with working pressure up to 16 bar at 150 ° C;
- Corrugated finning increases the heat exchange area and enhances the heating efficiency;
- High-performance aluminium fans;
- Precise balancing practically eliminates vibration and extraneous noise during operation of the air curtains;
- Working chamber of special structure developed jointly with the Punker company (Germany) creates a stabilized laminar air flow;
- Minimization of turbulent flows in the air curtains ensures the formation of a dense shearing flow at the nozzle exit which protects the opening;
- Universal connection to the heating system - pipes are output on the left or right side of the housing.

Application area: shopping centres, industrial sites, warehouses and logistic centres, hangars and depots, underground parking.

	HPAC64201 Water	HPAC64202 Water	HPAC64203 Water	HPAC64204 Water	HPAC64205 Water	HPAC64206 Water
Heating power, kW	8.4 / 7.9 / 7.3	18.4 / 17.0 / 15.5	27.7 / 25.2 / 22.4	18.1 / 16.5 / 14.7	29.2 / 26.6 / 23.7	36.6 / 33.3 / 29.6
Capacity, m³/h	1400 / 1200 / 1000	2300 / 2000 / 1700	3200 / 2700 / 2300	2500 / 2100 / 1700	4000 / 3200 / 2600	5000 / 4200 / 2400
Maximum installation height, m	3.5	3.5	3.5	4.5	4.5	4.5
Supply voltage, V	230	230	230	230	230	230
Air temperature increase, °	23.6 / 25.5 / 27.8 °	27.4 / 27.4 / 29.5 °	27 / 29.2 / 31.9 °	23.2 / 25.2 / 27.8 °	23.5 / 25.4 / 28 °	23.4 / 25.4 / 28 °
Control	Remote control with thermostat					
Device dimensions (WxHxD), mm	1090x260x240	1450x260x240	1900x260x240	1100x300x290	1510x300x290	1960x300x290
Package dimensions (WxHxD), mm	1130 330 280	1512 330 280	1940 330 280	1140 385 325	1540 385 325	2060 385 325
Net/gross weight, kg	19 / 20.8	26 / 28.5	30 / 32.7	23.7 / 25.5	31 / 33.5	43 / 46.2

Notes

[illegible]



Happy to help

Smith's Environmental Products Ltd is one of the leading manufacturers of heating products in the UK. We are committed to achieving the highest standards and our faith is supported by a free three year parts and labour guarantee with every product. Our customer service is second to none and we are happy to offer any help and guidance that you might need.

Stockists

All products are available nationally from Builders' Merchants, Plumbers' Merchants, Heating Equipment Distributors and Kitchen Equipment Distributors. In the event of difficulty, please contact us or visit our website www.SmithsEP.co.uk for details of your nearest stockist.

Information and advice

A product brochure containing full technical specifications and list prices is available to download from our website or in hard copy from our office. Also available on our website are price lists, individual product data sheets, installation & user guides, where to buy, who to contact and a media centre.

Alternatively contact our office 9.00am to 5.00pm Monday to Friday.



For product information, customer services or sales support call us on

01245 324900

For the Republic of Ireland, contact MT Agencies on 01 864 3363

sales@smithsep.co.uk

Smith's Environmental Products Ltd

Blackall Industrial Estate, South Woodham Ferrers, Chelmsford, Essex CM3 5UW

www.SmithsEP.co.uk



#ThinkSmiths